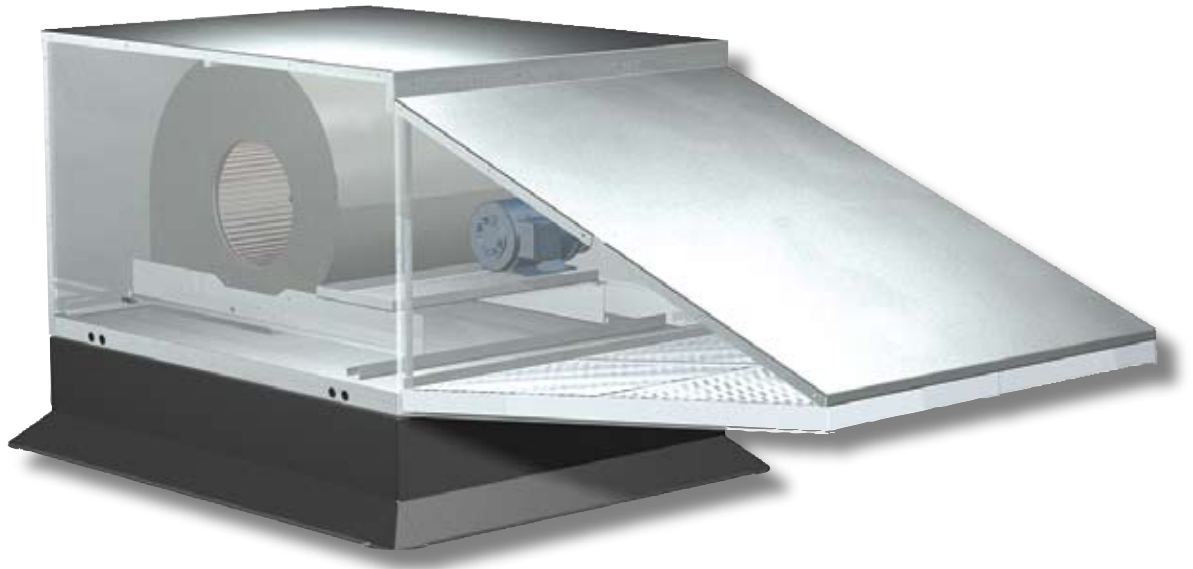




Untempered Make-Up Air Units



XKSFB and XKSFD models are UL Listed for electrical (UL US 705) File no. E40001.

* UL is optional and must be specified.



XKSFD and XKSFB models are ETL Listed.

Untempered Model Overview

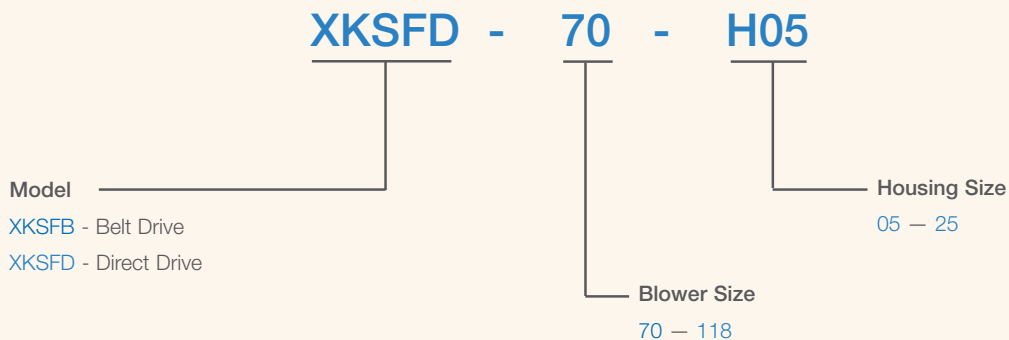
Accurex's untempered make-up air units are specifically designed to provide industry leading performance and durability for restaurant and other food service applications. Untempered make-up air units are available in belt drive (XKSFB) and direct drive (XKSFD) arrangements, for maximum performance and flexibility. Eight available blower sizes provide airflow capacities up to 9,800 cfm (16,650 m³/hr) and static pressure capabilities up to 2.0 in. wg (497 Pa).

Accurex untempered make-up air units incorporate an industry first hinged design. The hinged design minimizes installation time, while maximizes access to fan and motor assemblies. Accurex's untempered make-up air units feature:

- XKSFB and XKSFD sizes are certified to UL 705
- All blower sizes are tested in our accredited laboratory to ensure accurate fan performance
- Casing is constructed of G90 galvanized steel

Model Number Code

The Model Number Code is designed to completely identify the unit. The correct code letters must be specified to designate belt or direct drive, configurations and size.



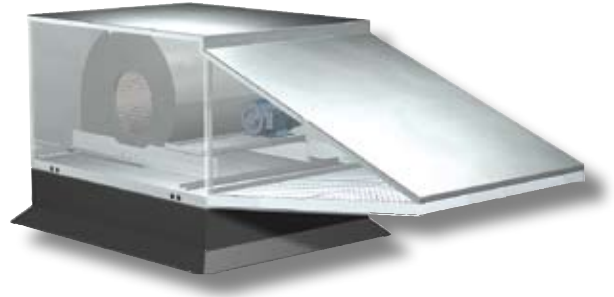
Untempered

Model Comparison

XKSFB, XKSFD.

XKSFB / XKSFD

Model XKSFB (belt drive) and XKSFD (direct drive) supplies untempered make-up air where needed. Choose from a downturned or extended weatherhood. Both are designed to provide compliance to NFPA 96 when used with a combination package. Horizontal and downblast discharge arrangements are available. Airflow ranges from 800 to 9,800 cfm (1,359 to 16,650 m³/hr).



Standard Construction Features

Lifting Lugs – Located on the base rail for ease of rigging and installation.

Nema-3R Disconnect – Factory mounted and wired to the motor. All wiring and electrical components comply with the National Electric Codes (NEC) and are either UL/C-UL US Listed or Recognized.

G90 Galvanized Construction – Provides superior corrosion resistance and insures the appearance is maintained for the life of the unit.

UL Class 2 Washable Filters – Effortlessly removable and cleanable one-inch aluminum mesh filters are sized such that air velocities do not exceed 900 fpm.

Vibration Isolators – True vibration isolators contain two independent studs with rubber neoprene to support the drive assembly and blower, for long life and quiet operation.

Hinged Access Door – Allows straightforward access to motor, drives and blowers for maintenance.

UL 705 Product Certification – Assures the safety of electrical components and connections within power ventilators.

Blower Assemblies – Double-width, double inlet forward-curved fans are statically and dynamically balanced. Ground and polished shafts mounted in permanently lubricated ball bearings, with a minimum L(10) life in excess of 100,000 hours, provide unparalleled quality and reliability.

Motor – Energy efficient motors, complying with EPACT standards for single speed ODP and TEFC enclosures are carefully matched to the fan load. Single-phase motors provided with the XKSFB and XKSFD are thermally protected at 2 hp and less.

Drive Assembly – Drives are sized for a minimum of 150% of the driven horsepower. Machined cast pulleys are adjustable for final system balancing. Belts are static-free and oil-resistant.

Accessories

Speed Controller – Available on the XKSFD, the speed controller provides an economical means of system balancing.

Special Coatings – Permatecor™ coating is available for a durable, long lasting finish. Decorative coatings are also available in a variety of colors to match existing building fixtures. Consult your Accurex representative for coating selections.

Discharge Blower Arrangements – Multiple discharge arrangements are available to meet job-specific requirements.

Intake Dampers – Powered or gravity dampers prevent unintended air transfer between the outside and space.

Unit Mounted Control Center – Factory mounted supply fan starter, overloads, and a Class II transformer for a secondary voltage in the unit.

NEMA-3R Remote Starter Control Panel – Provides power to the supply and exhaust fans through either a single-point connection or multiple power connections. Starters, disconnects, Class II transformers, and fusing is provided for each voltage source.

- Multiple supply voltages
- Wide range of horsepower
- Disconnect switch(es)
- Control transformer for low voltage remote switching
- Terminal strips
- Fuse blocks
- Electronic motor overload protection

Weatherhood – With a combination package, a downturn weatherhood provides a minimum of 36 inches of vertical separation between supply and exhaust air streams and the extended weatherhood provides 10 feet of horizontal separation between supply and exhaust streams. Both configurations are designed to satisfy NFPA 96, simplifying the installation while meeting codes.

Supply Voltages – Multiple voltages in single and three phase are available to conveniently match building power.

Roof Curbs – Prefabricated roof curbs are available to reduce installation time and costs by ensuring compatibility between the fan and the roof opening. All curbs are lined with fiberglass insulation to prevent condensation and to reduce sound levels. Combination packages allow an exhaust fan and make-up air fan to be mounted on a common curb, with weatherhood options complying with NFPA 96 Standards. See the roof curb section in this catalog for more information.

Untempered Combination Packages XKSFB. XKSFD.

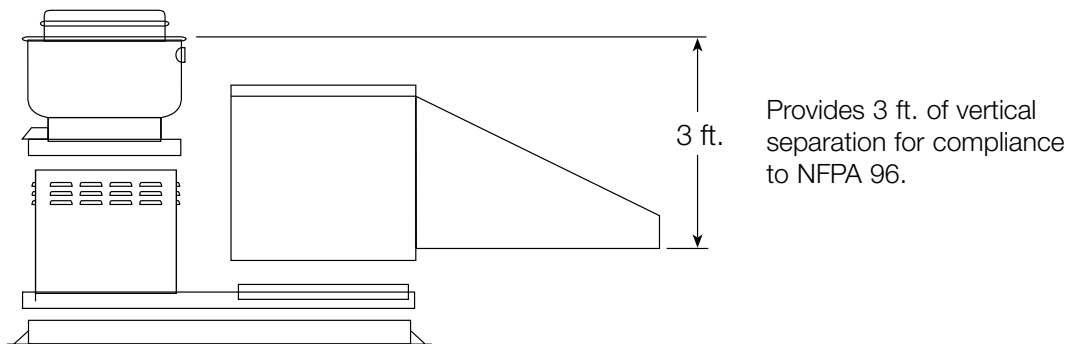
Combination Packages

With either ten feet of horizontal separation or three feet of vertical separation, Accurex has a combination package for your requirements. The Accurex combination package simplifies installation and reduces field labor costs. This pre-engineered design offers the benefit of only one roof penetration for both supply and exhaust ducts, while ensuring complete compatibility and interface between the supply fan, exhaust fan, curb and combination extension.

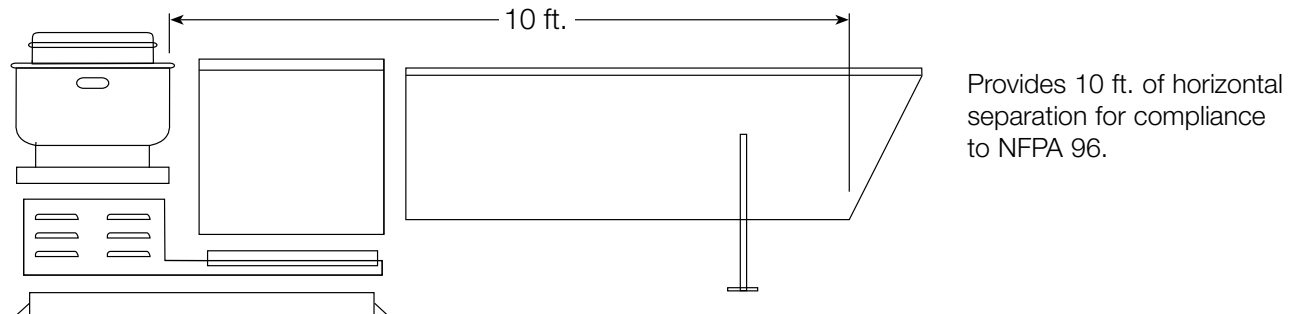
Accurex combination packages are specifically designed to comply with NFPA 96, which states:

- Exhaust duct must terminate at least 24 in. above the roof deck.
- Fan discharge must terminate at least 40 in. above the roof deck.
- There must be at least 10 ft. of horizontal or 3 ft. of vertical separation between the intake and exhaust discharge.

3 Ft. Vertical Separation - Standard Weatherhood



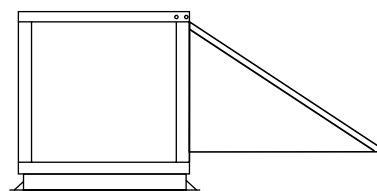
10 Ft. Horizontal Separation - Extended Weatherhood



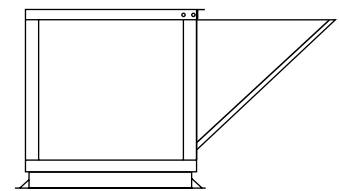
Note: Consult local codes and the authority having jurisdiction if there are questions concerning the use of this product.

Standard Arrangements

Models XKSFB and XKSFD have a compact design that is available in both downblast discharge (arrangement DB) and horizontal discharge (arrangement HZ). Installations may be as stand alone supply fans as pictured at right or as combination packages with exhaust and supply fans on a common curb.



Arrangement DB



Arrangement HZ