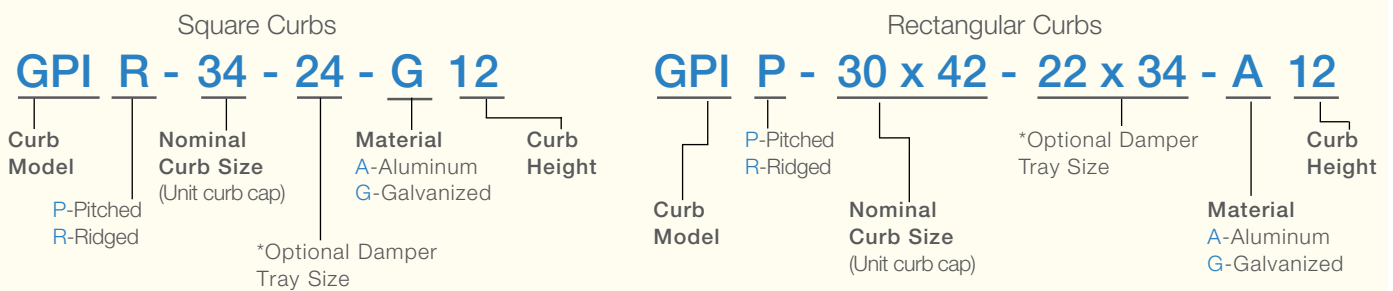


Accurex offers prefabricated roof curbs, which reduce installation time and costs by ensuring compatibility between the fan, curb and roof opening. A wide variety of roof curbs are available, including: flanged, straight-sided, canted, pitched, ridged, vented, and sound-absorbing.

Extensions raise the fan's discharge and can provide an accessible mounting location for dampers. Insect screen bases and vented extensions are also available.

## Model Number Code

The Model Number Code is designed to completely identify the roof curb. The correct code letters must be specified to designate configurations and size.



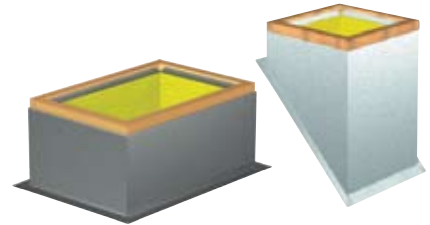
\*Shown only when specified

# Roof Curbs

## Model Comparison

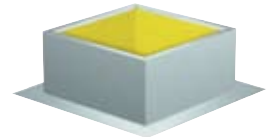
### Models GPI, GPIP and GPIR

These curbs are designed for roof decks that are covered with 2 to 6 inches of insulation. Models GPI, GPIP and GPIR are standard with fully welded construction, wood nailer, 1-inch insulation and 2-inch flashing flange. Model GPI is for use on flat roofs, GPIP for pitched roofs and GPIR is available for ridged (double pitched) roofs. Models are available in heights of 12 to 24 inches.



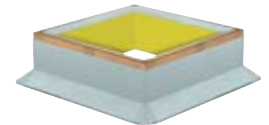
### Models GPF, GPFP and GPFR

These curbs are designed for non-insulated roof decks and are standard with fully welded construction and 1-inch insulation. Model GPF is for flat roofs, GPFP is for pitched roofs and GPFR is available for ridged (double pitched) roofs. Models are available in heights of 8 to 24 inches.



### Model GPS

This curb is designed for use on flat, non-insulated roof decks. It consists of a fully welded body and 1-inch of insulation. Model GPS is available in heights of 8 inches to 18 inches. Raised cant is available on model GPR.



### Model GPFV

The GPFV vented roof curb is typically used for kitchen applications, where the vents allow hot air and gases to escape between the ductwork and roof curb. This curb is designed for use with Accurex's model XRUB, XRUBS or XRUD fan to provide the required 40 inch minimum discharge height above the roof line (per NFPA 96). This curb is to be used on non-insulated flat roof decks.



### Options and Accessories

- Damper Trays
- Insulation (All except GPE, VCE and GPFV)
- Step for Insulation (GPR only - up to 6 in.)
- Double Shell Construction (All except GPE)
- Single Pitch (GPI and GPF)
- Ridge Mount (GPI and GPF)

Roof Type/Application	Description	Model and Service
Flat, insulated or non-insulated roof decks	Welded, straight-sided construction with rigid fiberglass insulation and 2 in. mounting flange	GPI - Galvanized 12 in. high, with or without damper tray, square sizes for stock fans
Flat, pitched or ridged, insulated or non-insulated roof decks		GPI - Aluminum or galvanized, other heights, non-stock square and rectangular sizes
Flat, non-insulated roof decks	Welded, canted construction with rigid fiberglass insulation	GPS - All types, sized to meet your requirements
Flat, pitched or ridged, non-insulated roof decks	Welded, straight-sided construction with rigid fiberglass insulation and 5 in. mounting flange	GPF - All types, sized to meet your requirements
Flat, insulated roof decks	Welded, raised cant construction with rigid fiberglass insulation	GPR - All types, sized to meet your requirements
Adaptors/Reducers	Used to match new fans to existing roof curbs. Welded galvanized steel or aluminum.	Curb Adaptors and Reducers

For complete product information contact your local Accurex representative.

#### Models GESS and GESR

These equipment supports are designed for use on both insulated (GESR) and non-insulated (GESS) flat roof decks. A variety of sizes and widths are available. Models GESS and GESR are available in welded aluminum or galvanized steel. Available in heights of 8, 12 and 14 inches and widths of 4, 6 and 8 inches.



#### Models GPE and GPEX

Both extended base models mount between the fan and roof curb. Heights range from 12 up to 24 inches. Models consist of welded aluminum or galvanized steel. The GPE is designed with an access door to provide easy access to the damper and damper actuator as well as fulfilling additional height requirements. The GPEX is also designed to provide additional height requirements without an access door.



#### Model VCE

The VCE vented curb extension is typically used in kitchen applications, where the vents allow hot air and gases to escape between the ductwork and the roof curb. Designed for use with an 8 inch high roof curb and Accurex's model XRUB, XRUBS or XRUD fan to provide the required 40 inch minimum discharge height above the roof (per NFPA 96). Model VCE is available in galvanized steel or aluminum.



#### Model ISB

Insect screen bases are available for applications where the building must be free of insects, as in food processing operations. Insect screen bases mount between the supply fan and the roof curb, and provide an additional 6 inches of height. Two bolted access doors are provided for removal and cleaning of the screen. Model ISB is constructed of galvanized steel or aluminum with a fine mesh screen made of aluminum or stainless steel.



#### Adapters and Reducers

Used to adapt or reduce the standard fan curb cap dimensions to a non-standard specified curb size, within 10 inches of standard. Adapters and reducers are most commonly used to match new fans to existing roof curbs. Construction consists of welded galvanized steel or aluminum.